

Volume 23, Issue 2

SPRING, 2014



# Introducing .. Caño Palma Cookbook!!

*Have you ever wanted to duplicate a meal that you had at Caño Palma Biological Station? Have you wanted to reminisce with photos from your time there? Well, now you can do both! Hot off the press we present the brand new "Recipes from Caño Palma Biological Station". Only \$20 Canadian funds plus shipping & handling. Order form on Page 9. Get your copy today!!*

CANADIAN ORGANIZATION FOR TROPICAL EDUCATION & RAINFOREST CONSERVATION

# RAPHIA

## Recipes from Caño Palma Biological Station



**Canadian Organization for  
Tropical Education &  
Rainforest Conservation  
(COTERC)**

# Notes From the Editor

*Hello to all our Members.*

*In this issue we welcome some guest authors.*

*Sean James is president of Fern Ridge Landscaping & Eco-Consulting located in Milton, Ontario, and a contributor to the Niagara Escarpment Views magazine. He has graciously allowed us to reprint the article on Page seven. We included this because of the contrast mentioned between Canada and Costa Rica.*

*Doug Durno's interview with a previous Caño Palma volunteer is the second in a series, and demonstrates what the lasting effects of a CPBS experience has on people who come from all over North America, Europe and the U.K. to participate in the various projects that we have at the station.*

*Nicolas Vanlangendonk is a returning volunteer to Caño Palma Biological Station, where he has been busily collecting monkey dung for his study on cortisone levels, as they may relate to stress.*

*You will also find a summary of the minutes from COTERC's Annual General Meeting held on Saturday, May 3.*

*Board member Bev Carter has been putting together a summary of the activities carried on at Caño Palma Biological Station, and this is being sent out as a separate publication. We hope that you are finding it interesting, and would welcome your comments.*

*And lastly, I am sorry to report that we have found it necessary to postpone our annual fundraising event Fiesta Verde. The date chosen (May 10) conflicted with other projects and field work going on with members and non-members.*

*On top of that, our guest speaker Ian Shanahan, was unable to appear on May 10th, due to a re-scheduling of his work.*

*What with summer arriving, and*

*the ensuing busy-ness that our members get involved in, we have re-scheduled Fiesta Verde to November 8th. Winter will be approaching, and we anticipate that this annual event will be another great fun-filled event. Our wonderful chef Vito Clemente will still provide a wonderful meal; Ian Shanahan will appear to speak on the Canada/Costa Rica connection of birds and there will be lots of great live and silent auction items.*

*We hope that you will join us on November 8th! Tickets can still be purchased through our website [www.coterc.com](http://www.coterc.com), or by contacting [info@coterc.org](mailto:info@coterc.org)*

*Your comments, photographs, etc. are always welcome. If you would like to write an article, either about an environmental issue in general or your own experience in Costa Rica, we'd love to hear from you!*

*Marilyn Cole*

*[vice-chair@coterc.org](mailto:vice-chair@coterc.org)*

## Donations Received

Professor Frances Burton has donated \$50 towards general operating expenses. Thank you!!

Rosseau Active Women donated \$200. Thank you!

Metal signs now appear at either end of the sea turtle monitoring transect on the North Beach.

The signs give visitors project and conservation information, as well as some of the legal guidelines for our beach. They were made possible by a grant from Toronto Zoo, and the two placed recently at either end of our transect, were the last to be put up. In 2013 we placed 4 more signs, in the village of San Francisco, at the local school and at the other two main beach access points (Turtle Beach Lodge and Hotel Vista Al Mar). Big thanks to our enthusiastic labourers, Ethan Yolleck, Adam Crawford and Jaime Golba, as well as the COTERC Board and Toronto Zoo, for their support.



# Interview With Kirstin Silvera

by Doug Durno

Most of us have ideas on how environmental laws could be improved. And we'd all like to do something to improve the lot of endangered species. Kirstin Silvera, from Burlington, Ontario, spent three months at Caño Palma in 2012 preparing herself to work on just such things. And her prep continues. After obtaining a BSc in biology from McMaster, and a Masters in Environmental Studies from York University, she is now attending the U of Windsor, working on a law degree. For the summer, Kirstin is working in Toronto as a law student at the Ministry of the Environment.

## **Q. Why did you want to go to a tropical research station?**

**A.** The primary reasons were because tropical areas are so biodiverse, and because species at risk are a special interest of mine. I wanted to see how different communities, local politics and laws in tropical areas impact such species.

## **Q. Why did you choose Caño Palma in particular?**

**A.** I had heard a lot about Caño Palma from a fellow student when I was an undergrad. Then while I was at York University I heard about its connection to the York International Internship Program and thought that this would be the perfect opportunity to go.



## **Q. What was the nature of your research project?**

**A.** I was looking at how the laws and policies in the Tortuguero region influenced sea turtle research there, and conversely how sea turtle research in the Tortuguero area influenced local laws and policies. In general, I learned that there is a lack of communication among stakeholders (ie. the local community, the Costa Rican government, the researchers, and NGOs) and a lack of consistency in reporting. So, although there are strong laws and policies in place, conservation could still be improved in the Tortuguero region. I hope that the ideas in my research paper can foster even small, incremental changes that encourage improved dialogue and consistency in reporting between conservation organizations, the local community, and the Costa Rican government.

## **Q. Have you done field research elsewhere?**

**A.** Yes, I helped collect data on species at risk while working at the Royal Botanical Gardens in Burlington. These species included the red mulberry tree, the bashful bulrush, butternut trees, northern map turtle, and Blanding's turtle. The turtle data (collected for the Royal Botanical Gardens in Cootes Paradise, a wetland on Hamilton Harbour), I used for my undergraduate degree in biology at McMaster University. I explored the potential factors influencing trends in the nesting sites of these turtles.

## **Q. Do you have any suggestions that would make Caño Palma a better experience for volunteers?**

**A.** I think everything Charlotte has implemented is amazing. So I can't think of anything off the top of my head.

## **Q. Besides your research, were there any other positives that you took away from Caño Palma?**

**A.** Everything I took away from Caño Palma was positive, but I think the biggest positives were the teamwork and camaraderie. The main things I learnt were: (1) how absolutely necessary long-term commitment is if you want to see improvement in something; (2) how complex research, conservation and community development really are; and (3) how technically and morally complex it is as an outsider attempting to work in a community and change or work around the way local residents have been doing things for years.

*Continued on Page 8*

# Summary of COTERC's AGM

On Saturday May 3, 2014 COTERC held its Annual General Meeting in the Boardroom of the Toronto Zoo. We thank the management of the Toronto Zoo for allowing us to use their facility.

Board members present:

*Chair—Shawn Blackburn*

*Vice-Chair—Marilyn Cole*

*Director of Site Services—Tom Mason*

*Director of Finance—Brandon Roy*

*Director of Membership—Jim Taylor*

*Director of Marketing—Darryl Swain*

*Director at Large—Bev Carter*

*Director at Large—Susan Kunanec*

## **Regrets:**

*Director of Education—Nia Gibson*

*Director of Conservation & Research—Dr. Kymberley Snarr*

The Chair of the Board, welcomed the membership to the meeting at 5:41 p.m., and introduced the current board members.

Marilyn Cole made a motion to approve the minutes from last year's AGM with amendment, seconded by Tom Mason and carried.

Amendment: Extend 2 Directors at Large and Vice-Chair for 1 year in order to have approximately half of the Director positions elected at alternating years, as outlined in the by-laws.

Each Board member reported on activities carried out under their portfolio during 2013/14. If any member wishes to see the detailed reports, please contact [info@coterc.org](mailto:info@coterc.org)

## By-Laws Report

Marilyn Cole reported that she had been working on revisions to the current by-laws over the past year, based on suggestions made by board members. After discussion, it was decided to form a committee to review the current by-laws and the proposed amendments during the summer months, and to present the document to the members at a Special Meeting in the fall for their comments and approval.

Members Barry McKee and Colette McKee, and Board members Tom Mason, Jim Taylor and Marilyn Cole will form the new committee.

## Election of Board Members

For the purpose of nominations and elections, the Vice-

Chair temporarily stepped down from her position and led the nomination process as follows:

Chair (as elected by Membership)

Nominations: Shawn Blackburn (declined)

\*Position remains vacant until next regular meeting

Director of Site Services

Nominations: Tom Mason (accepted, until a replacement can be found)

In Favour: all Opposed: none, carried

Director of Education

Nominations: Nia Gibson (pending acceptance)

In Favour: all Opposed: none, carried

Note: Nia Gibson declined to accept

Director of Special Events

Nominations: none

\*Position remains vacant until next regular meeting

Director of Membership

Nominations: Jim Taylor (accepted)

In Favour: all Opposed: none, carried

The Vice-Chair resumed her position with the closing of nominations and elections.

Please note:

2015 Elections will include:

Vice-Chair

Director of Conservation/Research

Director of Finance

Director at Large

Director at Large

Anyone who may be interested in standing for nomination can contact [info@coterc.org](mailto:info@coterc.org) prior to the 2015 Annual General Meeting.

## New Business

Chair Shawn Blackburn reviewed the concepts that were proposed to the Board in September :

*Not enough funds to sustain the current format that we have organized*

- We have several bills that need payment monthly
- We have no capital to start large projects
- We have no funds that can be sent to support the station

*We do not have an effective fundraising platform.*

- We have no dedicated webmaster able to actively communicate with the world
- We have no ongoing schedule of events
- We currently have no events coordinator

*Continued on Page 6*

# The Projected Expansion of the Port of Moin by Nicolas Vanlangendonk

The port of Limon Moin, in the central coastal area, is the largest terminal in Costa Rica, surpassing in 2012 one million TEU (an inexact unit of cargo capacity often used to describe the capacity of container ships and container terminals).

However, the port is limited in the size of the ships that it can

accommodate, and thus the number of containers. If the country is to compete in the market, the current port infrastructure is considered to be inadequate to accommodate traffic growth expectations, larger classes of container ships as well as more stringent requirements in supply chain management.

APM Terminals is an international container terminal company headquartered in The Hague, Holland. It is one of the world's largest port and terminal operators operating a Global Terminal Network with interests in 64 operating port and terminal facilities in 39 countries on five continents, with seven new port projects in development, as well as over 160 Inland Services operations providing container transportation, management, maintenance and repair in 48 countries. On February 24th 2011 the Government of Costa Rica came to an agreement with APM Terminals to build a new \$992 million harbour in Moin, just outside the city of Puerto Limón in the central Caribbean area of Costa Rica.

With this new harbour, Puerto Moin will



be able to receive ships of over 1000 feet (305m) long loaded with up to 9000 containers of 20 tons each. Previously, the port on the Caribbean Sea was restricted to ships of a capacity of "only" 1200 containers. The Government of Costa Rica hopes that this harbour will compete with Panama's Terminal to become the premier place in quantity and quality to move goods in the Caribbean area. The primary purpose triggering the construction of such a large infrastructure is to boost banana and pineapple exportation by permitting bigger ships loaded with more refrigerated containers to move intensively grown fruits to European and American markets. However, what must be considered is the necessity to expand the fruit plantations to meet this higher demand. In addition, in order to accommodate the inherent energy requirements of this project, a terminal exclusively dedicated to oil and its refining will be constructed. The new oil dock will be able to handle tankers in the 40,000 ton to 80,000 ton class and will be funded by the state-owned Refinadora Costarricense de Petroleo.

APM Terminals has a permit for 33 years. Their plan is to continue expansion of the harbour with two additional phases to accommodate the projected traffic of 1.5 million and then 2.5 million containers.

The first phase of construction of the biggest infrastructure project in the history of Costa Rica will start with the establishment of a 40 hectare island 500 m from the coast.

The construction of this island together with deepening the marine floor from 10 m deep to 18m deep (to permit heavier ships to navigate without floor abrasion) require the removal of 5.5 million cubic metres of sediment. Following this extraction, a second layer of much finer sediment will surface from the ocean

floor. According to specialists, this sediment will suspend in the water, making it blurry, thus affecting the feeding behaviour of plankton, fishes and marine mammals such as dolphins or sea turtles as well as their navigation and predation abilities. In addition, superficial and underground water will be affected by the destruction of the vegetation, potentially impacting the potable water of the town of Moin. Such construction could also alter marine current, which is important for the flora and fauna as well as climate regulation.

The new harbour will be a physical barrier for sea turtles nesting on the beach of Moin, even though it is considered to be a hot-spot for nesting leatherback turtles. Because of the constant very bright lights emanating from such activity, sea turtles nesting even further than Moin could be disoriented, and hatchlings could find it difficult to plot a proper course, as they make their way to the sea. Recent aerial nest monitoring has concluded that leatherback nesting has shifted from northern Costa Rican beaches toward Moin Beach. If the APM project goes ahead, it could result in a disaster for sea turtle populations in the Caribbean.

Moin is the beach where the conservationist Jairi Mora Sandoval was murdered in May 2013 by poachers/drug dealers. The brave young man had recently spoken out to the media and on social media about the lack of government support for the conservationists on this beach. Without backing from the Ministry of Environment, efforts by local police and Coast Guard have routinely fallen short of what is needed to safeguard people working tirelessly to protect the nation's natural treasures.

*Continued on Page 8*

# COTERC Eventing

As part of our environmental education objective, COTERC representatives manned a booth at several events recently:

March 30—**Reptile Expo**, Downsview Park, Toronto — Marilyn Cole, Nia Gibson, Tom Mason

April 5—**Halton Ecofest**, Oakville, Ontario—Marilyn Cole



April 13—**Ajax Reptile Expo**, Ajax —Susan Kunanec, Jim Taylor

May 18—**Canadian Association of Aquarium Clubs**, Humber College, Toronto —Marilyn Cole

Where possible, we are utilizing the computer game developed by Jim Taylor & Tom Mason, to test the knowledge of event visitors to the flora & fauna found in Costa Rica.

## Continuation of AGM Minutes from Page 4

- We do not meet the mission statement effectively
- Internal Communications need improvement

With the identification of the issues, priority objectives were identified and proposals made to help deal with these issues:

### Reduction of overhead costs to an absolute necessary minimum

- Remove bookkeeper wage
- Remove executive director wage
- Remove excess webpage/web management fee

### Increase the educational output from Board

- Create dedicated displays for expos/trade shows, etc.
- Increase presentations to schools and clubs
- Analyze and summarize all data coming from CPBS for presenting
- Complete fact sheet portfolio
- Have Board uniforms
- Create new logo

### Focus fundraising campaign to achievable goals

- Directly host annual Fiesta Verde
- Advertise school fundraising campaign
- Develop and promote donation based funding
- Research and apply for grants
- Seek out Board member to be Director of Special Events
- Continue to support CR community by selling CR made items

## Increase Board cohesion and direction

- Remove titles and work as a full group
- Divide entire Board into two divisions (CR Affairs and CAD affairs) with Head Directors for each
- Re-write of mission statement to focus on the reality of what we do
- Re-branding of charity (new logo, catch line, etc.) to reflect Canada/CR relationship
- Form dynamic teams (dynamos) and assign priority tasks
- Reduce number of meetings and implement mandatory presence
- Focus meetings to only action oriented discussions

## Old Mission Statement

COTERC is a non-profit organization devoted to the protection and conservation of tropical forests through research and educational initiatives. Our mission is to provide leadership in education, research, and conservation and the educated use of natural resources in the tropics.

## New Proposed Mission Statement

COTERC is a non-profit organization devoted to the protection and conservation of tropical forests through research and education. Our mission is to educate Canadians and the global community about the need to protect tropical forests through active research initiatives at our research station.

**As some of the tasks/objectives require new language in the by-laws, many of the objectives are dependent upon the new by-laws that will be approved in the future.**

There being no further business, the meeting adjourned at 8:35 p.m.

# Costa Rica vs. Canada — Our Natural Areas & Tourism

by Sean James

Travelling Costa Rica is amazing! With all the jungles, birds and wildlife, it's not surprising that 80% of Costa Rica's income is from tourism. Eco-organizations put a lot of thought into drawing in the public with eco-adventure attractions like zip-lining and canopy tours. It could be argued that this negatively affects the environment but the money brought in serves to protect more and more land, which in turn, brings in more tourists – a beneficial loop for all.

There are many spectacular sights to visit, including the Poas Volcano, which is part of the Cordillera Volcánica Central – a UNESCO Biosphere Reserve similar to our own Niagara Escarpment in that the United Nations deems it a unique environment in the world and therefore worth protecting. Another destination in the same Biosphere Reserve is the La Selva Biological Station, which protects 1,536 ha of lowland rainforest where tourists can rent cabins and tour the park. The Organization for Tropical Studies manages this and many other parks and preserves. They get quite creative about protecting land. They even pay farmers to protect trees on neighbouring land to provide habitat for the critically endangered Great Green Macaw. They do incredible fundraising work to protect and expand the areas they manage.



Woolly Opossum by Sean James

Researchers are always on the sites, studying the interactions of nature and recovery methods for endangered species. They recognize that there's money to be made while protecting nature...which allows them to protect even more. They work with non-governmental organizations (NGOs) and the government. Tourists, in several cases, stay *with* the researchers, getting to know them and seeing the work first-hand.

On the other hand, our Escarpment always seems to be under threat. Canada was once among the top tourist destinations in the world. Now we're ranked 13<sup>th</sup>. Cuts are made to our parks. Cuts are made to our tourist promotion budget. Even though it's a UNESCO site *and* it's in the Greenbelt, citizens are constantly forced to fight against new and expanding quarries. Much could be done to make protected land more accessible. Boardwalks through wetlands would bring in more tourists, especially birders, which would help pay to protect more land. (Are you seeing a common thread here?) Accessibility might also make us appreciate those areas more and fight (and donate) to protect them.

Through a mix of government, public interest groups and business relationships, even Mexico has managed to protect roughly 10% of its total area. Southern Ontario has only 3.8% protected! The most threatened areas in Ontario, including wetlands, tall grass prairie and oak savannah are in the south of the province.

People in Costa Rica buy farmland to turn it back into jungle and create habitat. Here, more homes and additions go up every year. Do we just think we have so much we can afford to waste it? Are business interests too powerful and too short-sighted to see the environmental services that natural



Peccary by Sean James

areas offer? Are environmental groups not doing a good enough job of communicating to government agencies and politicians? These are questions that we need to answer *soon* and we need to be reaching out to those in positions of power and influence. We need to be using our buying and voting power to protect what's important. We need to be active in local 'green' groups and we need to donate to groups like the Escarpment Biosphere

*As originally printed in Niagara Escarpment Views*

As part of COTERC's environmental education mandate, two

## COTERC SPEAKING OUT!

Board members recently spoke to interested groups

Chair Shawn Blackburn made presentations to:  
Oak Ridges Trail Association  
Centennial College

Vice-Chair Marilyn Cole made a presentation to  
Rosseau Active Women (RAW)

RAW is a group of women who live in the Rosseau, Ontario women who fundraise for various groups through dinners and craft sales.

RAW donated \$200 to COTERC. Thank you!!

Continued from Page 5—The Projected Expansion of Port Moin

In the past, the government of Costa Rica has spent millions of dollars to market itself as a wildlife paradise to attract tourists. Tourism, a million dollar industry bringing a lot of employment and money to Costa Rican populations, has made Costa Rica the wealthiest country of Central America. Should the terminal proceed, there will be an even greater demand to convert forest to banana and pineapple production, thus pushing aside the area's wildlife. In the short term, construction of the harbour will create between 400 to 1000 jobs but if tourism decreases as a result of the activity surrounding the development of a huge terminal, this important source of revenue could be lost in the province and throughout the country.

Many individuals and groups within Costa Rica are opposed to the project, citing the long-term drastic affects on the country's ecosystem. According to the Tico Times, (January 21, 2014) "The courts already have rejected two union lawsuits, but environmental groups have announced plans to file another with the Constitutional Chamber of the Supreme Court if SETENA approves the project. Environmentalists say the project would damage a nearby wetland and that SETENA is constitutionally obligated to reject the request".

On January 24<sup>th</sup> 2014, the construction of the new cargo dock faced for the second time a delay following disruption of a public hearing caused by local citizens and union members.

In contrast, APM's website reports "The project has strong government and public support in Costa Rica and international backing from Canada, the UK and the US. The scheduled commissioning date is 2015, when limited operation is set to commence, ramping up to full capacity in 2017."

There are so many obstacles faced by the project being run by Dutch APM Terminals that it begs the question as to whether the Costa Rican government really wants it to happen. Since it was awarded construction of the New MegaPort for specialized container ships in Moin, the company has faced dozens of lawsuits and other legal measures in the courts, giving rise to continuous doubts about the realization of the project. Considering the potential long-term harm to the environment of Costa Rica, directly and indirectly, perhaps the withdrawal of APT Terminals would be the best result.

## Rare Frog Species Found Near Caño Palma

Elias Bader, Research Coordinator at Caño Palma Biological Station, reported the observation of *Tantilla reticulata* by Kathy Parker, high bidder on the 2013 Fiesta snake is generally uncommon to rare throughout its distribution April 10th, 2014. Commonly known as a litter snake, this re-species in the Tortuguero area. *Tantilla* are nocturnal secretive buried in the moist leaf litter of semi-forested regions or under



Station, reported the observation of *Tantilla Verde* package to visit the station. The range, and was discovered on the cerro on resents the first recorded sighting of this snakes. They spend most of their time rocks and debris.

Continuation of Interview with Kirsten Silvera Page 3

**Q. What was the biggest adjustment you had to make in order to live in a remote rainforest?**

**A.** Being on my own. It was difficult to deal with homesickness and I had to get used to being in the same place for a long time. I learned that taking time to myself was a good thing.

**Q. Did your experience at Caño Palma alter your future ambitions and goals?**

**A.** I would say strengthened rather than altered. It made me more passionate and driven with my goal of effecting positive changes to environmental law and species-at-risk laws both on a local and international scale. Plus I hope to somehow effect change that can positively impact how conservation work and research is used and prioritized in decision-making at different levels of government.

**Q. What memories of Caño Palma do you carry with you?**

**A.** Far too many to keep track of, but I think of it every day. But probably the biggest memory is being humbled by the people I worked with. Working with people who are truly selfless when it



# RECIPES FROM CAÑO PALMA BIOLOGICAL STATION—ORDER FORM

If you have ever visited Caño Palma, you will want this souvenir, whether you can cook or not!! The divider pages feature colour photos of people, wildlife and station buildings, while the delicious recipes speak for themselves! Marilyn Cole gathered recipes from the cooks, staff and volunteers and compiled the best into this unique cookbook. The Hints and Definitions section feature suggestions that all volunteers need to know!

**For additional copies of our cookbook,  
please use this order form:**

## ORDER FORM

**COTERC  
Box 335  
Pickering, ON L1V 2R6**

Please send \_\_\_\_\_ copies of this cookbook at \$20 each plus  
\$ \_\_\_\_\_ postage and handling for each copy ordered.

Name \_\_\_\_\_  
Address \_\_\_\_\_  
City \_\_\_\_\_  
State/Prov \_\_\_\_\_ Zip/Postal Code \_\_\_\_\_  
Telephone \_\_\_\_\_  
Email \_\_\_\_\_

## ORDER FORM

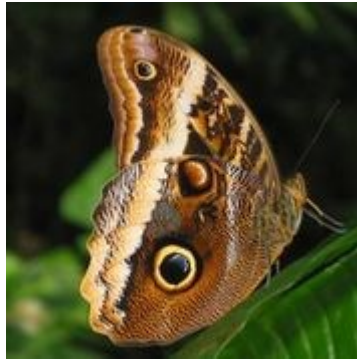
**COTERC  
Box 335  
Pickering, ON L1V 2R6**

Please send \_\_\_\_\_ copies of this cookbook at \$20 each plus  
\$ \_\_\_\_\_ postage and handling for each copy ordered.

Name \_\_\_\_\_  
Address \_\_\_\_\_  
City \_\_\_\_\_  
State/Prov \_\_\_\_\_ Zip/Postal Code \_\_\_\_\_  
Telephone \_\_\_\_\_  
Email \_\_\_\_\_



Geoffroy's Spider Monkey



Owl Butterfly



Tamandua

**Canadian Organization for Tropical Education and Rainforest Conservation**

**Membership Application Form**

*This is a request for:* NEW Member: \_\_\_\_\_ Membership Renewal: \_\_\_\_\_ Date: \_\_\_\_\_

*Membership Type:* Individual \$25: \_\_\_\_\_ Student/Senior: \$20 \_\_\_\_\_ Family: \$40 \_\_\_\_\_ Corporate \$100 \_\_\_\_\_

Surname: \_\_\_\_\_ Given Name: \_\_\_\_\_ Initial: \_\_\_\_\_

As a member of COTERC a copy of our quarterly newsletter "Raphia" will be sent to your primary E-Mail address unless you check one of the following options.

- Do not E-Mail the newsletter to me. Please send a hard copy to my Mailing Address
- I do not wish to receive the "Raphia" newsletter

**MAILING ADDRESS:**

Street: \_\_\_\_\_ Apt: \_\_\_\_\_

Town/City: \_\_\_\_\_ Province/State: \_\_\_\_\_ Postal Code \_\_\_\_\_

Country: \_\_\_\_\_ Postal / ZIP Code: \_\_\_\_\_

Cheque, payable to COTERC	Credit Card	No.  Expiry Date	Cash		
---------------------------------	----------------	------------------------	------	--	--

Persons visiting a COTERC station who have not previously arranged membership can pay in cash directly to the Station Manager.

**Please mail form to Box 335, Pickering, Ontario L1V 2R6, Canada**

### **ADVISORY COMMITTEE**

*Dr. Robert Murphy*

*Dr. Fiona Reid*

*Dr. Peter Silverman, Order of Ontario*

*Dr. Wm. Rapley*

Raphia Editor & COTERC

Co-founder *Marilyn Cole*

### **BOARD OF DIRECTORS**

Chair

*Vacant*

Vice-Chair

*Marilyn Cole*

Finance

*Brandon Roy*

Marketing

*Darryl Swain*

Membership & Archives

*Jim Taylor*

Education

*Vacant*

Site Services

*Tom Mason*

Conservation & Research

*Dr. Kymberley Snarr*

Director of Special Events

*Vacant*

Director at Large

*Susan Kunanec*

Director at Large

*Beverly Carter*

**Canadian Organization for Tropical Education and Rainforest Conservation (COTERC)**

**Box 335**

**Pickering, Ontario L1V 2R6, Canada**



We're on the Web!

[www.coterc.com](http://www.coterc.com)

Facebook—Canadian Organization for Tropical Education and Rainforest Conservation

Twitter @COTERC

CONTACT US AT  
[INFO@COTERC.ORG](mailto:INFO@COTERC.ORG)

## **Launch of a New Logo**

Our logo of hands holding trees has been our brand since the inception of COTERC. In an effort to more fully represent the relationship between Canada and Costa Rica, we are launching a new logo, depicting a Canadian sugar maple on one side, and palm leaves on the other, with a monkey in between.

A big thanks to Leslie Crawshaw for the design. We hope you like it!



## **WE WANT TO HEAR FROM YOU!**

We welcome any comments or suggestions from our members so that we can be sure that you feel involved. If you have an idea for an article, or better yet, would like to write one yourself –if you have a photo or two that you think we could use — if you have a suggestion for improving Raphia, please do send it along to us at [vice-chair@coterc.org](mailto:vice-chair@coterc.org)

If you have a general comment about COTERC or Cano Palma Biological Station, please email [info@coterc.org](mailto:info@coterc.org)